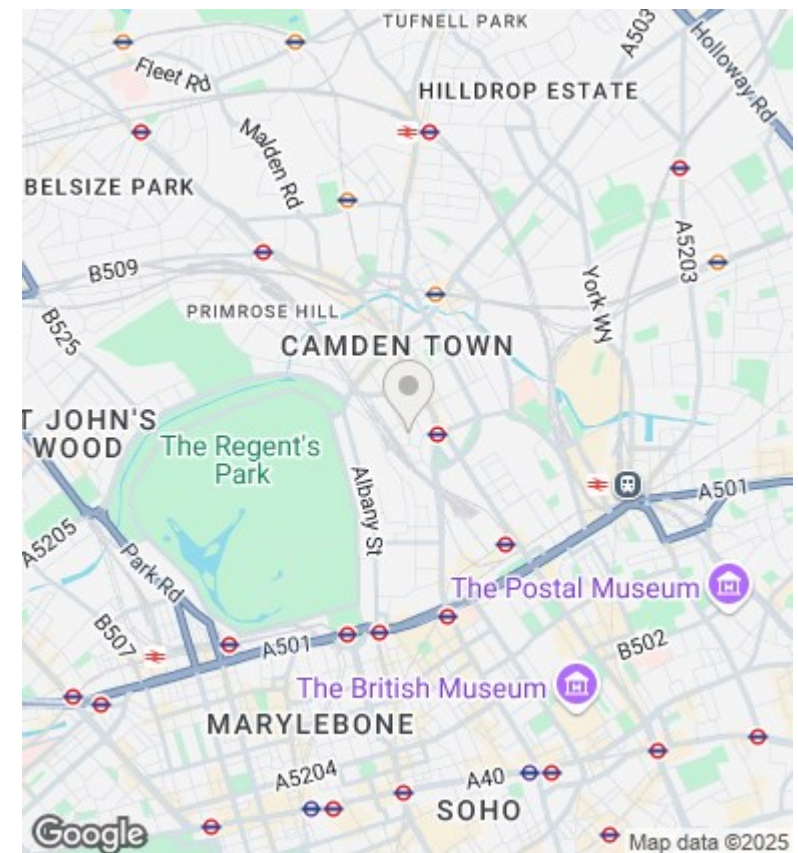
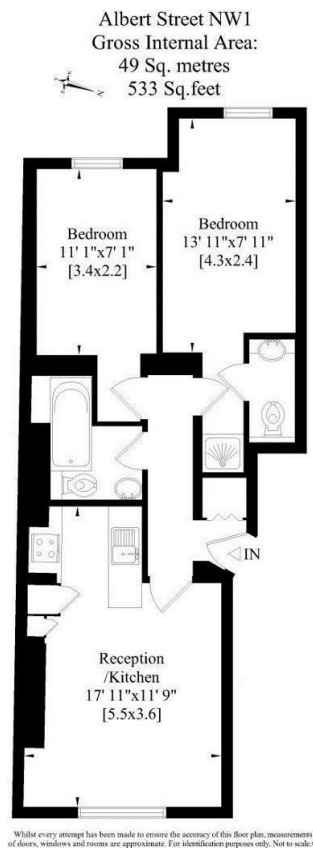




Raised Ground Floor, 11 Albert Street, London, NW1 7LU

£2,550 PCM

- Open Plan Reception / Kitchen
- Regents Park & Primrose Hill are both nearby
- Separate Shower Compartment and WC
- High Ceilings
- Three Piece Family Bathroom
- Two Double Bedrooms
- Close proximity of Mornington Crescent & Camden Town



Viewings

Viewings by arrangement only. Call 020 7485 0112 to make an appointment.

Council Tax Band

B

EPC Rating:

C

Energy Efficiency Rating		
	Current	Potential
Very energy efficient - lower running costs		
(92 plus) A		
(81-91) B		
(69-80) C	74	81
(55-68) D		
(39-54) E		
(21-38) F		
(1-20) G		
Not energy efficient - higher running costs		
England & Wales	EU Directive 2002/91/EC	